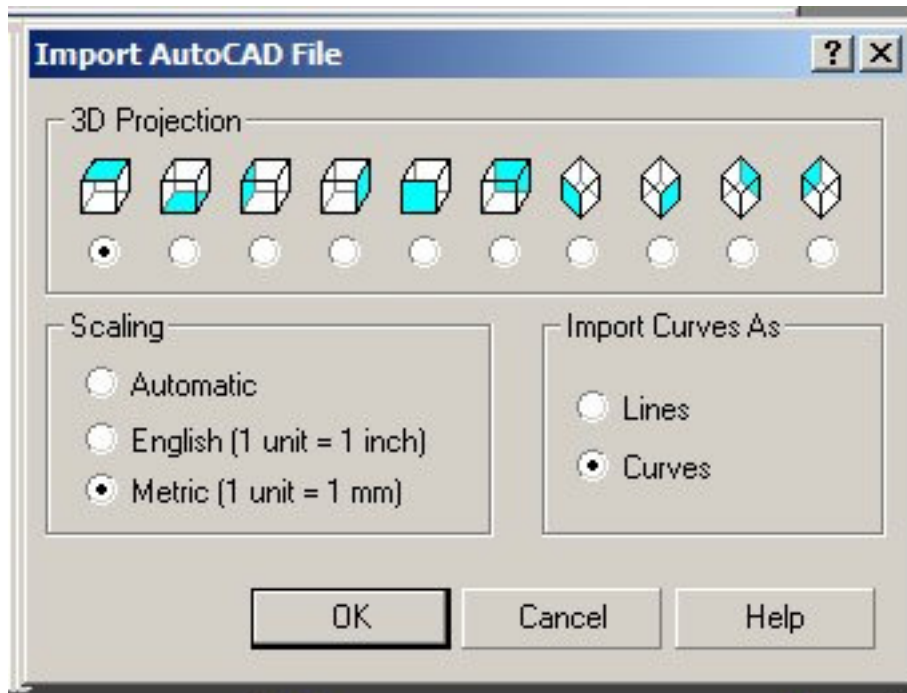


## METHOD FOR CONVERTING DXF FILES TO PRINT OUTS

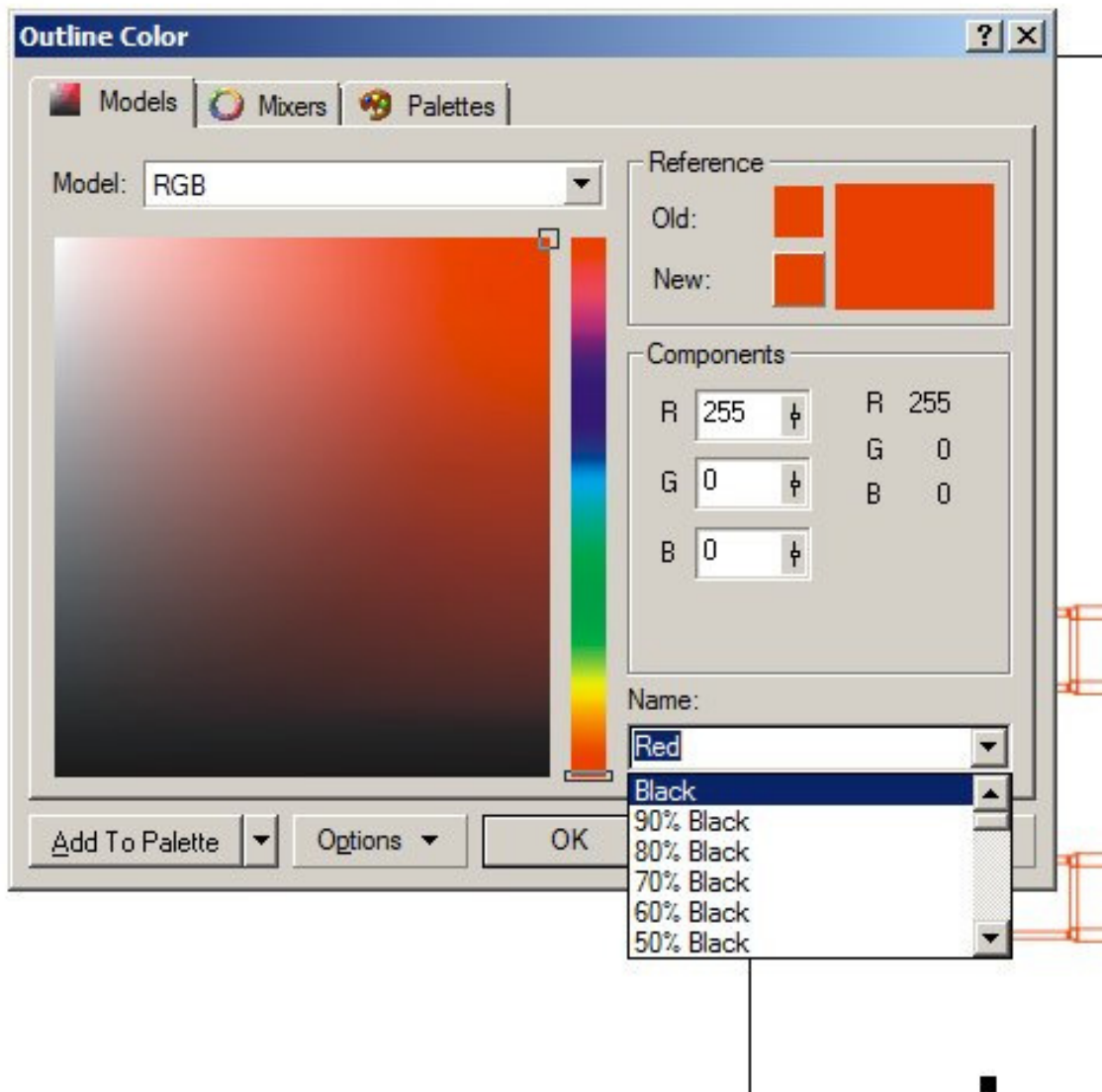
1. Load the file into coreldraw10 as in room 337 as dxf-Autocad



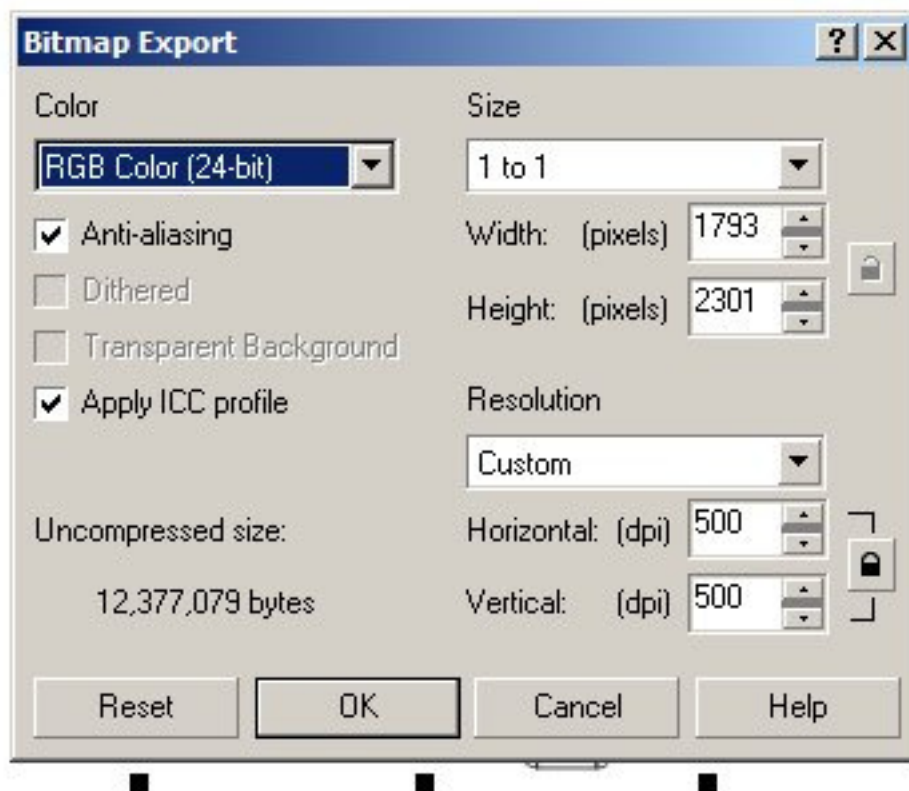
2.

3. Select the graphic in corel then change the line colour to black by selecting the pen nib icon.

Select the colour icon then select black as below...



4. Save the image as a bmp file by using the export function in coreldraw10.



5. Load the bmp file into Microsoft paint as in start menu/accessories\paint.
6. Use the fill tool to fill in the rectangles and curves.
7. Save the file
8. can be printed to a laser